

PEREL®

HAND- & MANHOLE SEAL

**Reusable
permanent elastic seal
for manhole caps from enamelled
or rustproof steel**

DN 200 Handhole with winder
clasp and Perel® handhole seal on
enameled steel agitator kettle



Signs:

Clean and lasting connections thanks to long-term elasticity of the PEREL® seal. Seal cover in PTFE TFM.

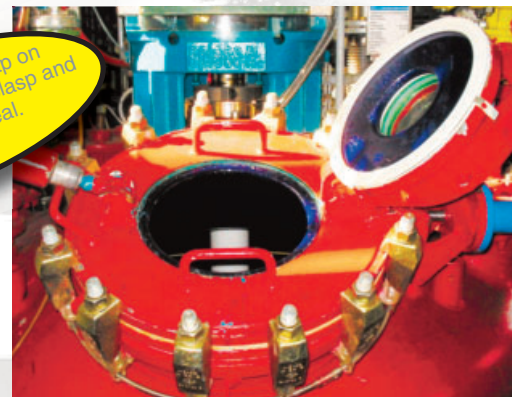
Operational areas:

In the process technology of the chemical and pharmaceutical industry as well as into related areas.

Trouble-free sealing:

thanks to good thick sealing with low surface pressure.

Opened DN 300 fill in cap on
manhole cap with winder clasp and
Perel® handhole-seal.



High mechanical resilience:

The long-term elasticity of the Perel® seal allows the application under demanding operating conditions, e.g. repeated opening and closing.

Unrestricted storage time:

The seal does not harden and has no ageing process

Suitable for

the most different material combinations such as Steel email / steel email, steel email / graphite, glass / glass, rust-proof steel / glass, rustproof steel / Rustproof steel and connections with synthetic-coated parts (PTFE, PVDF or Halar).



Perel® handhole seals
with connection flaps



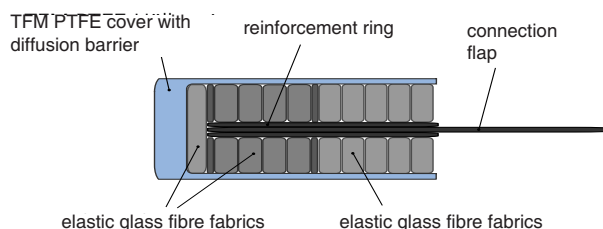
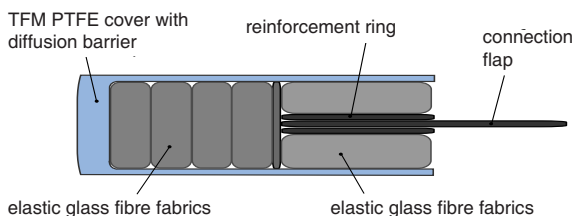
phone no.
++49(0) 7157 560 0
Telefax no.
++49(0) 7157 560 200

www.heckerwerke.de
mail@heckerwerke.de

HECKER WERKE GmbH
Arthur-Hecker-Str. 1
D - 71093 Weil im Schönbuch

Construction principle of the Perel ® hand and manhole seal:

The chip-taking made seal cover in PTFE TFM with diffusion barrier prevents the penetration of products in the seal. The permanent-elastic seal insert is resistant to corrosion and exists from PTFE impregnated fiberglass fabric. The three-dimensional lying fibre structure causes the elasticity of the Perel ® seal. This chemically inert fiberglass insert has good emergency sealing qualities, e.g., with damage of the cover. The hand and manhole seals are made with a rustproof strengthening ring to protect a blowing out. Connection flaps allow a good fixation of the seal in the hand or manhole cap. The so achieved positioning allows, together with the permanent-elastic qualities, a repeated opening and closing. The product, the production kind and the trade name are property of the company Gommec S.A., switzerland.



Handhole seal HL according to DIN 28148 / BN 83 part 8

label	dimensions
HL 125	145 x 185 x 9/7 mm
HL 150	168 x 210 x 9/7 mm
HL 200	218 x 265 x 9/7 mm
HL 200 K°°	211 x 258 x 9/7 mm
HL 250	268 x 315 x 9/7 mm

Seal for filler cap DN 300 on manhole cap:
(compensates irregularities up to 2,5 mm)

HL 300	298 x 342 x 11/8 mm
HL 300 E°°	298 x 342 x 13/10 mm



Manhole seal ML according to DIN 28148 / BN 83 part 8 (compensates irregularities up to 3mm)

ML 500	528 x 605 x 12/8,5 mm*
ML 600	628 x 705 x 12/8,5 mm*
ML 300x400°	324/424x380/480x12/8,5 mm*
ML 320x420°	344/444x395/495x12/8,5 mm*
ML 350x450	374/474x430/530x12/8,5 mm*

Technical data:

seal cover: TFM PTFE / reinforcement ring 1.4404 /

Soft material insert: elastic PTFE-glass faser fabric

Temperature range: -20°C up to 200°C

Pressure: vacuum up to 6 bar

Resistant practically to all medias (ph 0-14) according to the TFM-cover and the PTFE-glassfaser fabric insert.



Installation recommendations:

starting torque: by using clip screws absolutely look for the guideline of the enamel manufacturer.

Use the grounding clip to fix the seal at the filler-, manhole- or handhole-cap (with clip ring or safed screws).

Sealing parameters:

Q_{min}: 2 MPa / Q_{SMAX}: 40 MPa / Q_{CRIT} 50 MPa

footnote:

* thickness of the seal under no pressure / installation height pressed (approximation)

° oval special dimensions °° round special dimensions